

THE INFORMATION CONTAINED IN THIS DRAWING IS
THE SOLE PROPERTY OF SYNERGY MFG. ANY
REPRODUCTION IN PART OR WHOLE WITHOUT THE
WRITTEN PERMISSION OF SYNERGY MFG IS
PROHIBITED.

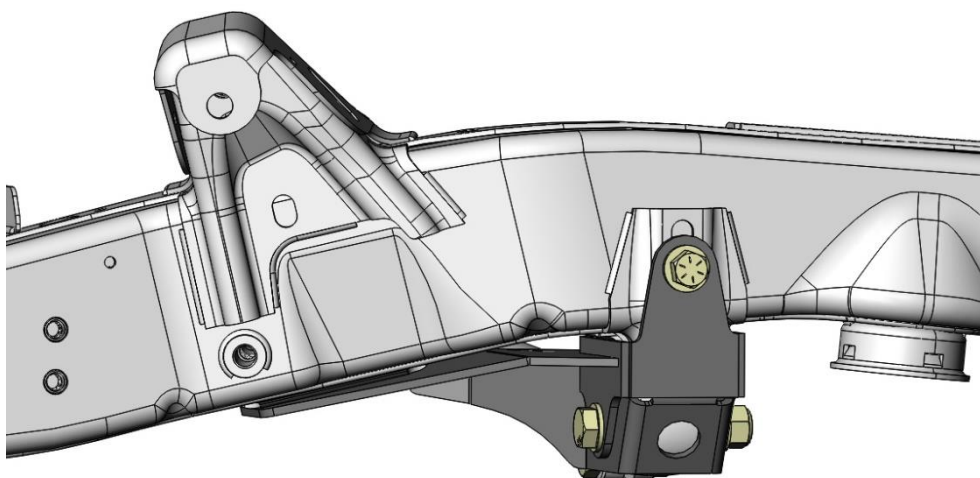
Revisions

Rev.	Description	Date	Approved
A	Initial Release Per ECO 19-139	12/10/19	KB
B	Add diesel and 392 ECO 21-069	11/12/21	MB



Jeep Wrangler Rear Track Bar Frame Brace Installation Instructions

Applications:
2018+ Jeep Wrangler (JL/JLU)



TITLE:

**JEEP JL REAR TRACK BAR FRAME
BRACE INSTALLATION INSTRUCTIONS**

SIZE	DWG NO:	REV
A	8880-01-INST	B
	SCALE: N/A	PAGE 1 OF 6



JEEP JL REAR TRACK BAR FRAME BRACE INSTALLATION INSTRUCTIONS

Thank you for purchasing the best aftermarket products available for your vehicle. We strongly feel that the parts you are about to install should meet or exceed your expectations for performance. Proper assembly is critical to the performance of these components and the vehicle as a whole. Please take the time to carefully read these instructions and familiarize yourself with the installation procedure before working on your vehicle. If you have any questions PLEASE contact Synergy Manufacturing BEFORE beginning installation. Thanks again for supporting Synergy – enjoy the performance benefits of the best aftermarket products available for your vehicle!

Synergy Manufacturing

Phone: (805) 242-0397

Email: support@synergymfg.com

Modifying or otherwise altering vehicle components may cause the vehicle to handle differently than originally designed. It is the driver's responsibility to familiarize themselves with the performance and handling characteristics of the modified vehicle. Vehicles with larger diameter than stock tires must be driven carefully and cannot be expected to perform as stock or meet OEM performance with regard to handling, braking or crash performance. Ensure all replacement components are compatible with vehicle capacities so as not to overload components, especially tires. It is up to the individual to ensure that the vehicle and all components are compatible with the intended vehicle use, including load ratings, road conditions, and driver abilities. Thorough and frequent vehicle inspections are recommended to ensure a safe and reliable state of readiness, especially after off-highway use.

PARTS LIST

8880-01 Jeep JL Rear Track Bar Frame Brace		
QTY	Part Number	Description
1	888001-PC	JL REAR TRACK BAR FRAME BRACE
1	888001-05-PL	JL REAR TRACK BAR FRAME BRACE SWAY BAR SPACER
1	N/A	M14-2 X 100MM LONG, HEX BOLT, CLASS 10.9
2	N/A	M14 WASHER, CLASS 10.9
1	N/A	M14-2 TOP LOCK NUT
1	N/A	7/16-14 UNC X 5.0, HEX BOLT, GRADE 8
2	N/A	7/16 FLAT WASHER SAE, GRADE 8
1	N/A	7/16-14 UNC TOP LOCK NUT

GENERAL NOTES

- These instructions are also available on our website; www.synergymfg.com. Check the website before you begin for any updated instructions and additional photos for your reference.
- This kit spaces the sway bar down approximately 3/16" further than where it was previously located. If you are running sway bar drop spacers this may affect clearance with the exhaust.
- This is a track bar bracket BRACE and requires the stock track bar bracket to function as designed. This is not intended to repair or replace the stock track bar bracket. If the stock track bar bracket is damaged, complete required repairs before installing the Synergy Track Bar Brace.

TOOLS REQUIRED

- 15mm, 21mm, and 22mm Sockets and Wrenches
- 5/8" Sockets and Wrenches
- Rubber Mallet or Hammer
- Torque Wrench
- Jack and Jack Stands

ESTIMATED INSTALLATION TIME

1 Hour

INSTALLATION

1. Installation can be done on the ground or in the air on a lift. Make sure the vehicle is on a flat, level surface and in gear or in park. Set the parking brake. Support the rear axle and remove the passenger side rear wheel (22mm socket).
2. Loosen and remove the rear track bar mounting bolt at the frame side end of the track bar (21mm socket and wrench). Support the track bar as you remove the bolt to prevent the track bar from falling down. Let the track bar rest below the frame side mount. See **Figure 1**.



Figure 1. Removing Rear Track Bar from Mount

3. Loosen and remove the 4 bolts that hold the sway bar mounting brackets to the frame (15mm socket for stock hardware, 17mm socket if using Synergy Sway Bar Drops). Let the sway bar hang down out of the way. See **Figure 2**. Synergy rear sway bar spacers are shown in **Figure 2**. For Hemi (392) powered Jeeps See Appendix A section 1 and 2.



Figure 2. Removing Sway Bar Mounting Bolts

- Slide the Synergy Rear Track Bar Frame Brace up into place on the frame (over the stock track bar mount), you may have to compress the factory ears in a small amount due to spring back on the factory bracket. Use the supplied M14-2 x 100mm bolt in the track bar bolt position in order to hold the brace in place. Install the 7/16-14 x 5.0 bolt with a 7/16 washer through the upper hole in the brace and frame and use another 7/16 washer and 7/16 top lock nut on the other side of the frame rail. Keep all the bolts loose at this point. See **Figure 3**.

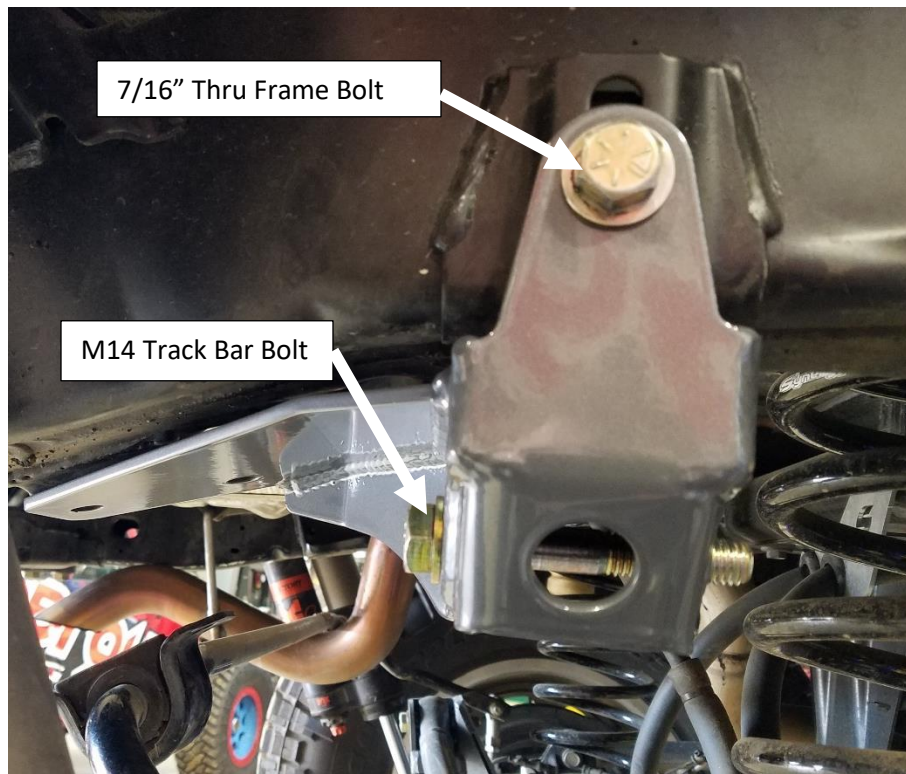


Figure 3. Synergy Rear Track Bar Frame Brace Bolt Locations

5. Reinstall the rear sway bar mount on the passenger side of the vehicle over the Rear Track Bar Frame Brace. If using sway bar drop brackets, re-install at this time. Leave hardware loose. See **Figure 4**. For Hemi (392) powered Jeeps See Appendix A section 3.

**Figure 4. Installing the Passenger Side Rear Sway Bar Mount**

6. Next install the Rear Track Bar Frame Brace Sway Bar Spacer Plate in between the drivers side sway bar mount and the frame. If using sway bar drop brackets, re-install at this time. Torque these bolts to 35 lb-ft (15mm socket for stock hardware, 17mm if using Synergy Sway Bar Drops). See **Figure 5**. **NOTE:** On diesel powered jeeps using a swaybar drop bracket, do not install the spacer plate, only install the drop bracket. If your diesel powered jeep does not have a sway bar drop bracket, install the spacer plate.

**Figure 5. Sway Bar Spacer Plate Install on the Driver Side Sway Bar Mount**

7. Torque the passenger side sway bar mounting bolts to 35 lb-ft (15mm socket for stock hardware, 17mm if using Synergy Sway Bar Drops). Torque the upper 7/16 bolt on the Rear Track Bar Frame Brace to 60 lbs-ft (5/8" socket and wrench). See **Figure 6**.



Figure 6. Torquing the 7/16" Thru Frame Bolt

8. Remove the frame side track bar bolt from the brace and re-install the rear track bar. Leave bolt hand tight until vehicle is on ground.
9. Re-install the passenger side rear wheel. Torque lug nuts to 125 lb-ft (22mm socket). Place vehicle back on ground and at ride height. With the vehicle on the ground and at ride height, torque the rear track bar bolt to 110 lb-ft (22mm socket and wrench). See **Figure 7**.



Figure 7. Torquing the Rear Track Bar Bolt

Installation is Complete

Table 1. Jeep Wrangler JL Bolt Torques

Bolted Joint Location	Wrench Size	Torque
Lug Nuts	22mm (OEM)	125 lb-ft
Synergy Rear Track Bar Brace Frame Bolt	5/8"	60 lb-ft
Rear Sway Bar Brackets to Frame	15mm (OEM) 17mm (Synergy)	35 lb-ft
Rear Track Bar	22mm	110 lb-ft

Appendix A

This Appendix describes the additional steps required to install the rear trackbar frame brace on a 392 Jeep Wrangler.

GENERAL NOTES

- These instructions are also available on our website; www.synergymfg.com. Check the website before you begin for any updated instructions and additional photos for your reference.
- The 392 powered Jeep has a factory-installed approximate 2 inch lift with some changes to mounting points and suspension geometry.
- The 392 Wrangler has factory-installed rear swaybar drop spacers.

INSTALLATION DEVIATIONS FOR 392 WRANGLER

1. PASSENGER SIDE ONLY: Cut the welds holding the factory rear swaybar drop spacer .See **Figure 8 and 9**.

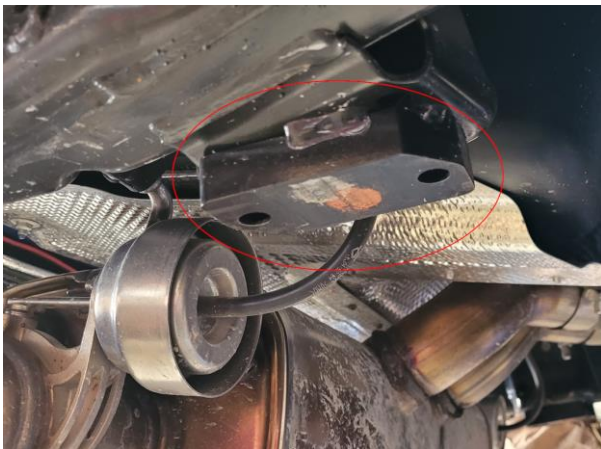


Figure 8. Factory Swaybar Drop spacer



Figure 9. Cutting the Swaybar Drop spacer Welds

2. Grind flush any remainder of the welds on both the Swaybar Drop Spacer and frame. We recommend painting the bare metal on the swaybar drop spacer and frame.
3. Due to frame geometry changes, there will be a 1/4 inch gap between the new Track Bar Frame Brace and the frame. This is acceptable and the bolts will pull the assembly flat, See **Figure 10 and 11**.



Figure 10. 1/4" Gap from Brace to Frame.



Figure 11. Track Bar Frame Brace Installed On 392 Wrangler