

THE INFORMATION CONTAINED IN THIS DRAWING IS THE SOLE PROPERTY OF SYNERGY MFG. ANY REPRODUCTION IN PART OR WHOLE WITHOUT THE WRITTEN PERMISSION OF SYNERGY MFG IS PROHIBITED.

Revisions			
Rev.	Description	Date	Approved
A	Initial Release Per Eco 21-044	5/17/2021	KB



## JT Rear Extended Sway Bar Links

### Installation Instructions

Applications:  
2019+ Jeep Gladiator



TITLE:  
**JEEP JT REAR EXTENDED SWAY BAR LINKS INSTALLATION INSTRUCTIONS**

SIZE	DWG NO:	REV
<b>A</b>	<b>8861-11-INST</b>	<b>A</b>
	SCALE: N/A	PAGE 1 OF 5



## JEEP JT REAR EXTENDED SWAY BAR LINKS INSTALLATION INSTRUCTIONS

Thank you for purchasing the best aftermarket products available for your vehicle. We strongly feel that the parts you are about to install should meet or exceed your expectations for performance. Proper assembly is critical to the performance of these components and the vehicle as a whole. Please take the time to carefully read these instructions and familiarize yourself with the installation procedure before working on your vehicle. If you have any questions, PLEASE contact Synergy Manufacturing BEFORE beginning installation. Thanks again for supporting Synergy – enjoy the performance benefits of the best aftermarket products available for your vehicle!

**Synergy Manufacturing**

**Phone: (805) 242-0397**

**Email: support@synergymfg.com**

Modifying or otherwise altering vehicle components may cause the vehicle to handle differently than originally designed. It is the driver’s responsibility to familiarize themselves with the performance and handling characteristics of the modified vehicle. Vehicles with larger diameter than stock tires must be driven carefully and cannot be expected to perform as stock or meet OEM performance with regard to handling, braking or crash performance. Ensure all replacement components are compatible with vehicle capacities so as not to overload components, especially tires. It is up to the individual to ensure that the vehicle and all components are compatible with the intended vehicle use, including load ratings, road conditions, and driver abilities. Thorough and frequent vehicle inspections are recommended to ensure a safe and reliable state of readiness, especially after off-highway use.

### PARTS LIST

<b>8861-11 JEEP JT REAR EXTENDED SWAY BAR LINKS</b>		
<b>QTY</b>	<b>Part Number</b>	<b>Description</b>
2	806011-PC	JK REAR SPHERICAL SWAY BAR LINK, POWDER COATED
2	416501	SWAY BAR END LINK TRE, 12MM STUD
2	410001-02	SPHERICAL SWAY BAR BUSHING
2	410001-03	SWAY BAR LINK BUSHING INNER SLEEVE
2	NA	JAM NUT FINE THREAD, 1/2-20 RIGHT HAND
2	NA	ZERK GREASE FITTING, STRAIGHT, 1/4-28

### GENERAL NOTES

- These instructions are also available on our website; [www.synergymfg.com](http://www.synergymfg.com). Check the website before you begin for any updated instructions and additional photos for your reference.
- Can be used alone for lift heights of 2-3” or used in conjunction with Synergy 8808-01 JT Sway Bar Link Drop Brackets for lift heights of 3-5”.
- Replacement bushings and tie rod ends are available from our web site; [www.synergymfg.com](http://www.synergymfg.com).

## TOOLS REQUIRED

- 15 and 18mm Sockets
- 14 and 18mm Wrenches
- Torque Wrench
- Jack and Jack Stands
- 6mm Allen Wrench or Socket

## ESTIMATED INSTALLATION TIME

**1/4 Hour**

## INSTALLATION

1. Installation can be done on the ground or in the air on a lift. You do not need to remove the rear wheels although it can make installation easier. Park the vehicle on level ground, transmission in park and the emergency brake on to keep the vehicle from rolling.
2. Unbolt the factory installed rear sway bar links from the rear sway bar using an 18mm wrench and 6mm Allen socket, see **Figure 1**. Pull the factory sway bar links out of the sway bar itself. It is easiest to do this by loosening both sides first and then removing the links. This removes any pressure on the sway bar if the vehicle isn't perfectly level.



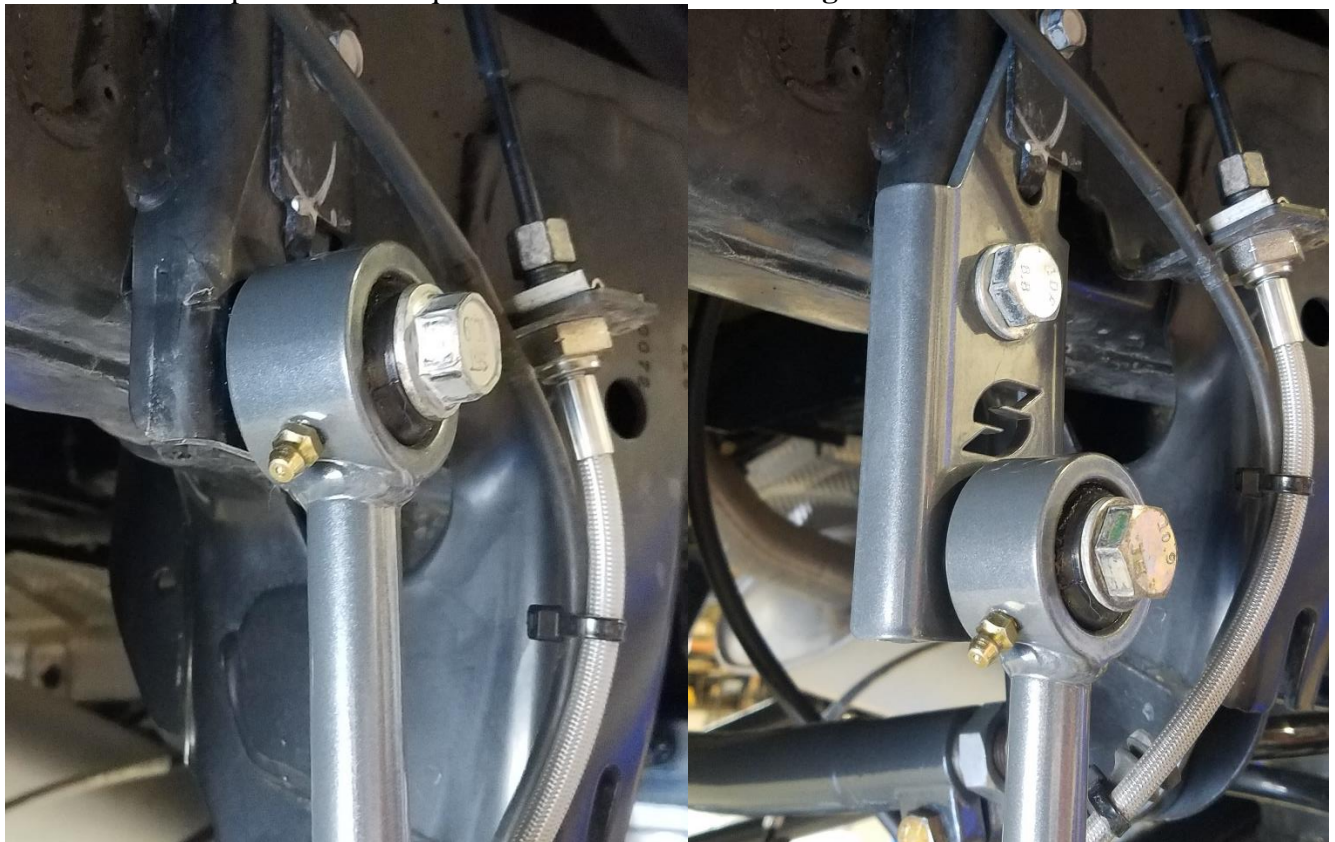
**Figure 1. Loosening the Sway Bar Lower Tie Rod End.**

- Next, use a 18mm socket to remove the upper bolt holding the sway bar link to the frame. Remove the factory sway bar links. Retain the factory hardware. See **Figure 2**.



**Figure 2. Removing the Upper Sway Bar Link Bolt on the Frame.**

- Reuse the factory bolt to attach the new Synergy extended sway bar link to the frame. If using the 8808-01 JT rear sway bar drop brackets, use the longer bolts provided in the kit to attach the sway bar links to the drop brackets. Torque the bolts to 70lb-ft. See **Figures 3. and 4**.



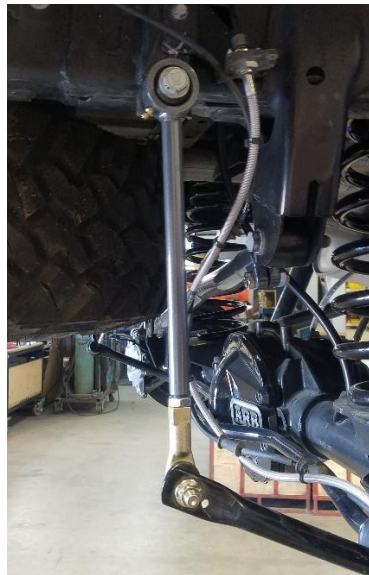
**Figure 3. and 4. Rear Sway Bar Link Bolted to the Frame or Using the 8808-01 Drop Brackets**

5. Insert both extended sway bar link TRE studs into the sway bar and tighten the nuts to 60lb-ft using a 14mm wrench on the back of the stud, be carefull not to tear the boot, and a 15mm socket on the nut, see **Figure 5**. Once again it is recommended that you install both TREs before you tighten them so as to not put pressure on the sway bar.



**Figure 5. Tightening Lower Sway Bar TRE Stud and Nut.**

6. Use a grease gun and the zerk fitting on the sway bar links to lubricate the bushings. One or two pumps is all it should take. Wipe off any excess.



**Figure 6. Correctly Installed Sway Bar Link.**

7. Installation is now complete. **Check bolt torques after approximately 150 miles.**

**Table 1. Vehicle Bolt Torques**

<b>Bolted Joint Location</b>	<b>Wrench Size</b>	<b>Torque</b>
Lug Nuts	22mm (OEM)	125lb-ft
Upper Sway Bar Link Bolt	18mm	70lb-ft
Lower Sway Bar Stud and Nut	14 and 15mm	60 lb-ft