

THE INFORMATION CONTAINED IN THIS DRAWING IS THE SOLE PROPERTY OF SYNERGY MFG. ANY REPRODUCTION IN PART OR WHOLE WITHOUT THE WRITTEN PERMISSION OF SYNERGY MFG IS PROHIBITED.

Revisions			
Rev.	Description	Date	Approved
-	Initial Release Per ECO 23-016	4/19/23	RG



**Ram 2500 14+ Rear Brake Line
Relocation Bracket**
Installation Instructions



TITLE:

**RAM, 14+ 2500, REAR BRAKE LINE
RELOCATION BRACKET
INSTALLATION INSTRUCTIONS**

SIZE	DWG NO:	REV
A	8765-02-INST	-
SCALE: N/A		PAGE 1 OF 5



RAM REAR BRAKE LINE RELOCATION BRACKET, 14+ 2500 INSTALLATION INSTRUCTIONS

Thank you for purchasing the best aftermarket products available for your vehicle. We strongly feel that the parts you are about to install should meet or exceed your expectations for performance. Proper assembly is critical to the performance of these components and the vehicle as a whole. Please take the time to carefully read these instructions and familiarize yourself with the installation procedure before working on your vehicle. If you have any questions PLEASE contact Synergy Manufacturing BEFORE beginning installation. Thanks again for supporting Synergy – enjoy the performance benefits of the best aftermarket products available for your vehicle!

Synergy Manufacturing
Phone: (805) 242-0397
Email: support@synergymfg.com

Modifying or otherwise altering vehicle components may cause the vehicle to handle differently than originally designed. It is the driver's responsibility to familiarize themselves with the performance and handling characteristics of the modified vehicle. Vehicles with larger diameter than stock tires must be driven carefully and cannot be expected to perform as stock or meet OEM performance with regard to handling, braking or crash performance. Ensure all replacement components are compatible with vehicle capacities so as not to overload components, especially tires. It is up to the individual to ensure that the vehicle and all components are compatible with the intended vehicle use, including load ratings, road conditions, and driver abilities. Thorough and frequent vehicle inspections are recommended to ensure a safe and reliable state of readiness, especially after off-highway use.

PARTS LIST

8765-02 Ram 14+ 2500 Rear Brake Line Relocation Bracket		
QTY	Part Number	Description
1	876502-PL	Ram Rear Brake Line Relocation Bracket, Plated

GENERAL NOTES

- These instructions are also available on our website; www.synergymfg.com. Check the website before you begin for any updated instructions and additional photos for your reference.
- The installation of this rear brake line relocation bracket will move the factory brake lines and ABS lines 1" towards the front of the vehicle, allowing for fitment of the 8765-01 Synergy Adjustable Rear Track Bar.
- The track bar relocation bracket features laser cut and CNC formed 12-gauge HRPO plate steel construction and corrosion resistant Zinc plate coating.
- After installation of the brake line relocation bracket the vehicles brake system will need to be bleed and purged of any air in the lines before the vehicle can be driven. It is suggested to familiarize yourself with the brake bleeding process before beginning the installation of the Synergy brake line relocation bracket. It is also wise to use a brake bleeding tool or have someone else help you.

TOOLS REQUIRED

- 13mm Socket and Ratchet
- 12mm, 17mm Wrenches
- Punch and Hammer
- Pliers (optional)
- Cutting Tool (hacksaw, cutoff wheel, etc)
- Brake Bleeder Tool

ESTIMATED INSTALLATION TIME

.5 Hours

INSTALLATION

1. Installation can be done on the ground or in the air on a lift. Make sure the parking brake is set and that the vehicle is properly supported on jack stands if pulling the wheels off.
2. Remove the ABS wires and brake line clips from the factory bracket. The ABS wires will pull out the top of the bracket, a punch or pliers may be used to pop the clips off. Keep the retainer clips as they will be reused. See **Figure 1**.

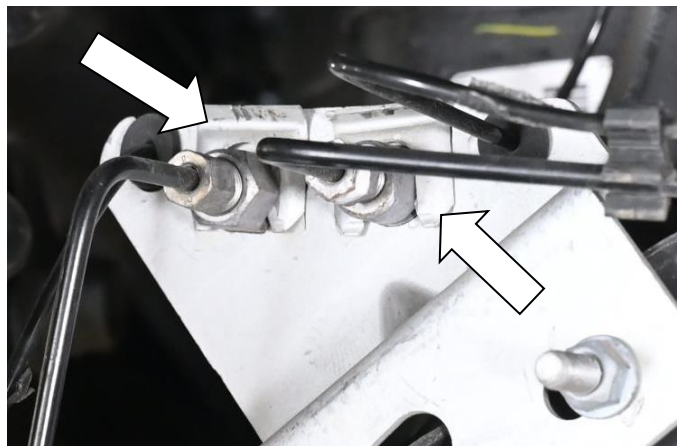


Figure 1. Clips to be Removed.

3. With a 12mm and 17mm wrench, crack open the brake lines and remove them from the factory bracket. See **Figure 2**.



Figure 2. Disconnecting Brake Lines.

4. Remove the 13mm nuts fastening the factory brake line bracket to the diff cover. Keep the nuts as they will be reused to attach the new brake line bracket. See **Figure 3**.

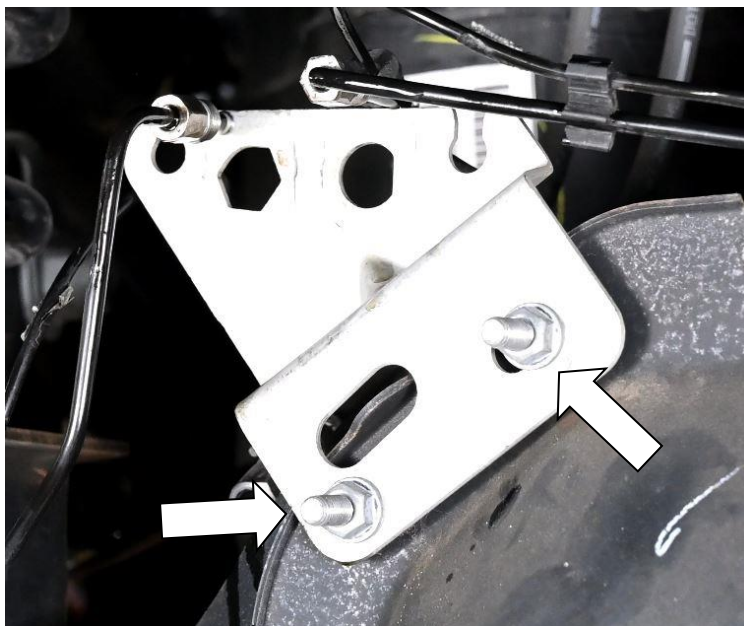


Figure 3. Nuts to be Removed.

5. Insert the brake lines into the Synergy MFG Rear Brake Line Relocation Bracket and reconnect them, do not tighten.

6. Measure and cut the top mounting stud so that there is 1/2" of threads left on the truck. This is done to ensure there is enough clearance for the track bar to cycle to full bump without making contact with the stud. Be sure to move the brake lines out of the way before cutting to ensure they are not damaged. **See Figure 4.**



Figure 4. Cutting Down Brake Line Bracket Mounting Stud.

7. Fasten the Brake Line Relocation bracket to the axle using the factory nuts removed in step 4.
8. Reinstall the brake line clips and ABS wires. **See Figure 5.**



Figure 5. Reinstalled Brake Line Clips and ABS Wires.

9. Tighten down the brake lines, do not over torque.
10. Bleed the brakes. Either have someone help you bleed the brakes or use a brake bleeding tool. Do not drive until you have made sure that all the air is out of the brake line system and you have a firm brake pedal. Check the brake line connections for leaks and tighten as necessary! Water in a spray bottle works very well for cleaning up residual brake fluid when done with the install.

Table 1. Vehicle Bolt Torques

Bolted Joint Location	Wrench Size	Torque
Brake Line Fitting @ Bracket	12mm / 17mm	Snug + 1/8 turn
Brake Line Bracket Nuts	13mm	15 lb-ft