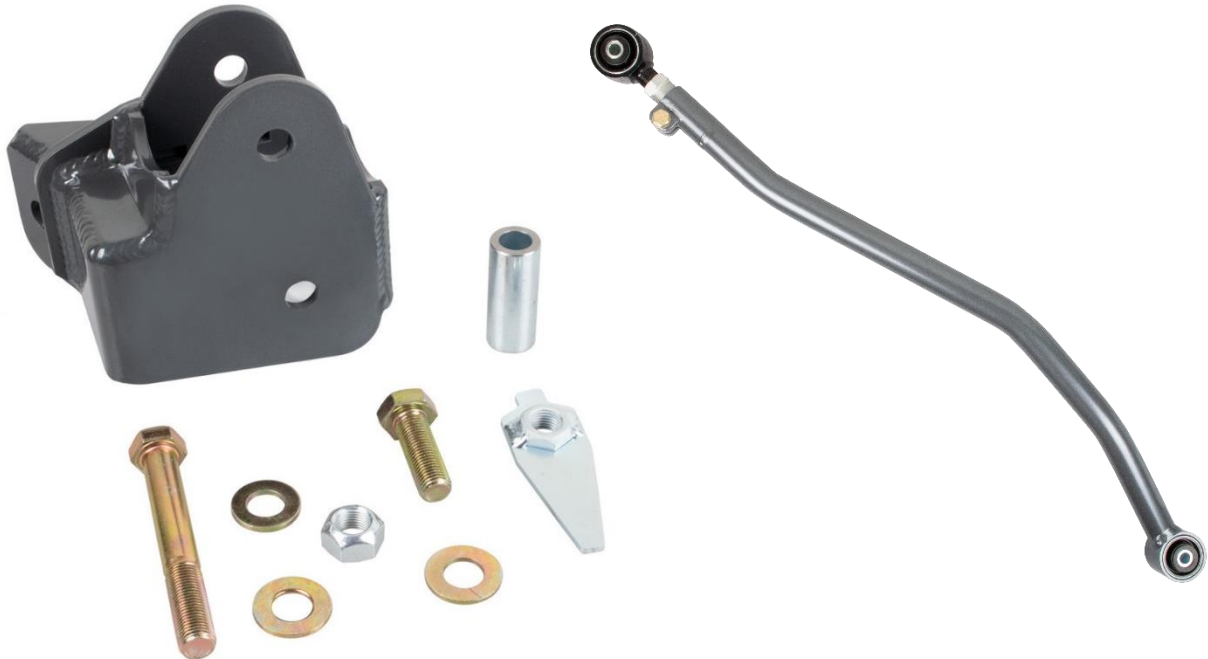


THE INFORMATION CONTAINED IN THIS DRAWING IS THE SOLE PROPERTY OF SYNERGY MFG. ANY REPRODUCTION IN PART OR WHOLE WITHOUT THE WRITTEN PERMISSION OF SYNERGY MFG IS PROHIBITED.

Revisions			
Rev.	Description	Date	Approved
-	Initial Release Per ECO 22-064	9/19/22	RG



**Ram 2500 14+ Rear Track Bar
Relocation Bracket and Adjustable
Track Bar**
Installation Instructions



TITLE:

**RAM, 14+ 2500, REAR TRACK BAR
RELOCATION BRACKET AND
ADJUSTABLE REAR TRACK BAR
INSTALLATION INSTRUCTIONS**

SIZE	DWG NO:	REV
A	8740-01-INST	-
	SCALE: N/A	PAGE 1 OF 10



RAM REAR TRACK BAR RELOCATION BRACKET AND ADJUSTABLE REAR TRACK BAR, 14+ 2500 INSTALLATION INSTRUCTIONS

Thank you for purchasing the best aftermarket products available for your vehicle. We strongly feel that the parts you are about to install should meet or exceed your expectations for performance. Proper assembly is critical to the performance of these components and the vehicle as a whole. Please take the time to carefully read these instructions and familiarize yourself with the installation procedure before working on your vehicle. If you have any questions PLEASE contact Synergy Manufacturing BEFORE beginning installation. Thanks again for supporting Synergy – enjoy the performance benefits of the best aftermarket products available for your vehicle!

Synergy Manufacturing
Phone: (805) 242-0397
Email: support@synergymfg.com

Modifying or otherwise altering vehicle components may cause the vehicle to handle differently than originally designed. It is the driver's responsibility to familiarize themselves with the performance and handling characteristics of the modified vehicle. Vehicles with larger diameter than stock tires must be driven carefully and cannot be expected to perform as stock or meet OEM performance with regard to handling, braking or crash performance. Ensure all replacement components are compatible with vehicle capacities so as not to overload components, especially tires. It is up to the individual to ensure that the vehicle and all components are compatible with the intended vehicle use, including load ratings, road conditions, and driver abilities. Thorough and frequent vehicle inspections are recommended to ensure a safe and reliable state of readiness, especially after off-highway use.

PARTS LIST

8740-01 Ram 14+ 2500 Rear Track Bar Relocation Bracket		
QTY	Part Number	Description
1	874001-PC	Ram Rear Track Bar Relocation Bracket, Powder Coated
1	874001-04-PL	5/8" ID x 2 1/8" Spacer, Plated
1	885005-PL	M14 X 1.5 Top Lock Nut Tab, Plated
1	N/A	Hex Head Bolt, UNF 9/16-18 X 3.50, Yellow Zinc Plate
1	N/A	Hex Head Bolt, M14 X 1.5 - 45mm, Yellow Zinc Plate
1	N/A	Top Lock Nut, UNF 9/16-18, Zinc Plate
3	N/A	Flat Washer, 9/16", Yellow Zinc Plate

8765-01 Ram 14+ 2500 Adjustable Rear Track Bar		
QTY	Part Number	Description
1	876501-PC	Ram Adjustable Rear Track Bar, Powder Coated
1	N/A	Hex Head Bolt, UNF 1/2-20 X 2.0, Yellow Zinc Plate
1	N/A	Top Lock Nut, UNF 1/2-20, Zinc Plate
2	N/A	Flat Washer, 1/2", Yellow Zinc Plate



RAM REAR TRACK BAR RELOCATION BRACKET AND ADJUSTABLE REAR TRACK BAR, 14+ 2500 INSTALLATION INSTRUCTIONS

GENERAL NOTES

- These instructions are also available on our website; www.synergymfg.com. Check the website before you begin for any updated instructions and additional photos for your reference.
- The installation of this rear track bar relocation will move the axle side mount up 3” effectively reducing side to side “wag” of the truck through the suspension travel and allows for fitment of the high clearance Synergy 8765-01 Adjustable Rear Track Bar.
- The track bar relocation bracket features laser cut and CNC formed 1/4" HRPO plate steel construction and durable powder coat finish.
- 1 1/4" of rear bump stop spacing is required when installing the 8740 Relocation Bracket. Failure to add sufficient bump stop spacing can cause the rear track bar to contact the frame of the vehicle.
- The 8765-01 Adjustable Rear Track Bar requires the use of the 8740-01 Track Bar Relocation Bracket to properly clear the brake line and abs sensors mounted on the rear differential.
- The adjustable rear track bar is made from 1 1/2” diameter 1/4” wall DOM tubing and allows users to fine tune the bar length to perfectly center the rear axle on a truck.
- The Dual Durometer bushings used in the adjustable rear track bar remove the bind found in the factory bushings when cycling through the suspension travel.

TOOLS REQUIRED

- 18 mm, 3/4", 21 mm, 22 mm, 7/8” wrenches and sockets
- 9/16” drill bit
- Drill
- Torque Wrench
- Permanent marker or center punch (marking tool)

ESTIMATED INSTALLATION TIME

1.5 Hours

INSTALLATION

8740 Rear Track Bar Installation Instructions,

1. Make sure the vehicle is parked on a flat, level surface. Ensure the vehicle is in park or in gear with the parking brake set.

2. Remove the sway bar links from the frame side mounts, **See Figure 1**. Removing the links will allow for easier access to the axle side track bar mount area.

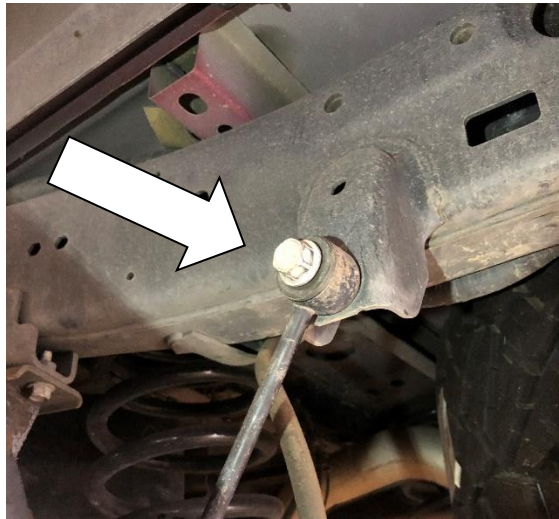


Figure 1. Sway bar End link Bolts to be Removed

3. It is easiest to remove the track bar with the vehicle on the ground and its weight compressing the suspension. Use a 21mm socket and ratchet (or impact) to loosen and remove the axle side track bar bolt. **See Figure 2**. Make sure not to lose the flag nut that secures the bolt on the back side of the bracket. Save the stock hardware as it will be re-used.



Figure 2. Axle Side Track Bar Bolt

4. Once the track bar hardware has been removed from the axle side, the truck can be lifted off the ground for easier access to the track bar bracket mounting area.
5. Use the same 21mm socket and ratchet to loosen the frame side track bar bolt. **See Figure 3.** Swing the track bar up and fasten it to the frame of the truck. If replacing the rear track bar, remove the frame side bolt and pull the track bar from the vehicle. Save the stock hardware if removed as it will be re-used.

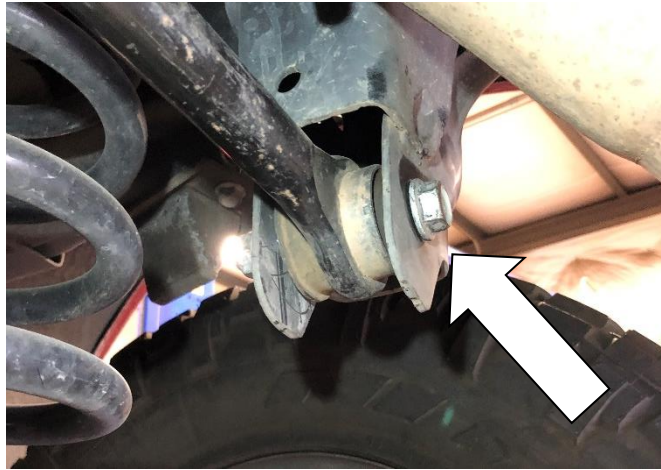


Figure 3. Frame Side Axle Bolt

6. Bolt up the new Synergy Rear Track Bar Relocation Bracket. Slide the bracket over the factory mount. Place the provided spacer inside the bracket in line with the factory mount hole and insert the factory frame side track bar bolt in the lower mounting hole. **See Figures 4 and 5.**



Figure 4. Track Bar Relocation Bracket Installed for Mock Up.

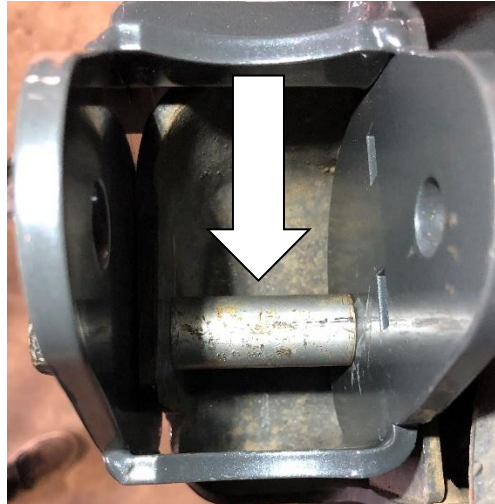


Figure 5. Installed Spacer Inside Track Bar Relocation Bracket.

7. With a permanent marker or punch, mark the side of the bracket where a secondary mounting hole will be drilled, See Figure 6.



Figure 6. Marking the Factory Bracket for Drilling.

8. Remove the Synergy Track Bar Relocation Bracket and drill out the marked hole with a 9/16" drill bit. Now is a good time to paint over any exposed metal from drilling.
9. Reinstall the Synergy Rear Track Bar Relocation Bracket with the factory bolt and flag nut in the factory track bar mounting location. Do not tighten.

10. Install the M14 bolt in the side hole of the bracket with the flag nut on the back side. **See figure 7.** Only one washer will be used under the head of the bolt, no washer will be used under the flag nut. Do not tighten the bolt.

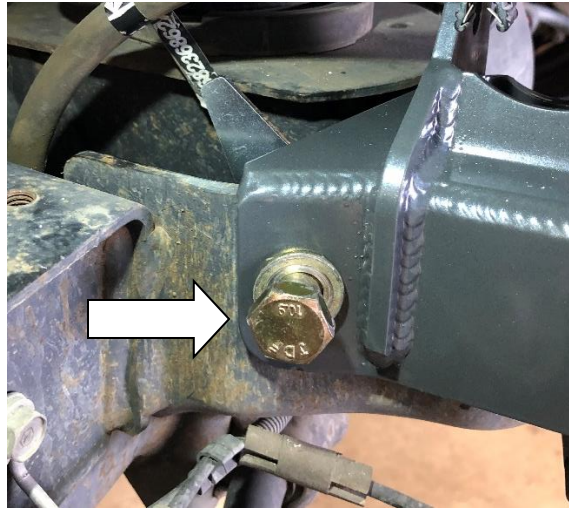


Figure 7. Installed Bracket with M14 Bolt and Flagnut.

11. If installing the 8765-01 Synergy Adjustable Rear Track bar, go to step 18. If retaining the factory rear track bar, continue to step 12.
12. Lower the vehicle to ground and let the full weight of the truck settle out the suspension. Ensure that all track bar and trackbar bracket hardware are loose.
13. Bolt the rear track bar in the upper hole of the track bar relocation bracket with the supplied 9/16" x 3.75" bolt. **See Figure 8.** Shaking the truck back and forth aid in aligning the track bar with the mounting hole.



Figure 8. Installed Track Bar Relocation Bracket with Factory Rear Track Bar.

14. With the vehicle sitting at ride height begin tightening the hardware. Start with the factory bolt in the bottom of the track bar relocation bracket.
15. Next tighten the M14 bolt on the side of the bracket, finally tighten the track bar bolts. Refer to **Table 1** for specific torque specs. It is important to make sure that the track bar bushings are not binding at ride height, failure to tighten the track bar hardware at ride height could cause premature joint wear, affect ride quality and cause the factory vulcanized bushings to delaminate and crack.
16. Re-install the factory sway bar end links, refer to **Table 1** for torque values.
17. Re-check bolt torques after the first 100 miles and again after each off-road trip.

Installation is complete

8765-01 Adjustable Rear Track Bar Install:

18. Remove the frame side track bar bolt, **See Figure 3**. Retain the factory hardware as it will be reused with the Synergy Adjustable Rear Track Bar.
19. Bolt the fixed side of the Synergy Adjustable Rear Track Bar into the 8740 Track Bar Relocation Bracket with the supplied 9/16 x 3.75" bolt as seen in **Figure 9**. Be sure to use washers on both sides of the bolt. Do not bolt in the frame side of the track bar yet.

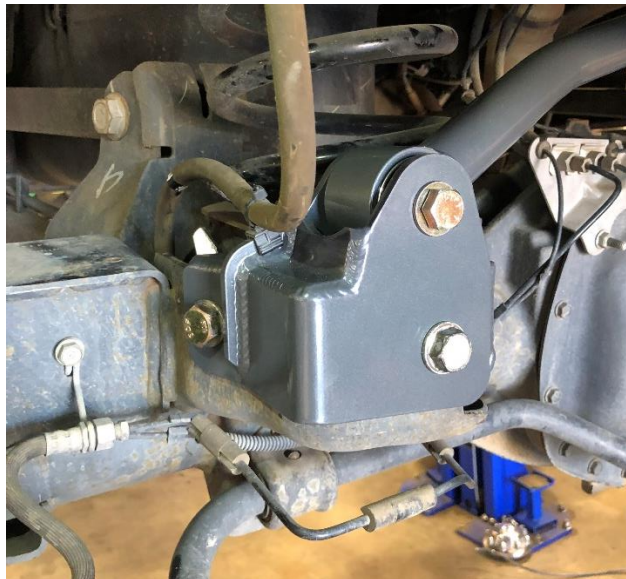


Figure 9. Fixed Side of the Adjustable Rear Track Bar Bolted into relocation Bracket.

20. Lower the truck to ride height and let the vehicle weight settle the suspension.

21. Adjust the track bar using a 1 1/4" or large adjustable wrench until the frame side bolt can be installed. See figure 10.



Figure 10. Adjusting the Rear Track Bar to Align the Frame Side Bolt.

22. Beginning with the factory track bar bolt on the axle side, tighten the relocation bracket and track bar hardware except for the 1/2" pinch bolt on the double adjuster. Refer to **Table 1** for specific torque specs.
23. With all mounting hardware tight, it is time to center the axle. Make sure the pinch bolt is loose and the double adjuster sleeve can be rotated.
24. Use a tape measure and straight edge to measure the distance from the tire to the fender. See **Figure 11**. Turn the double adjuster sleeve to lengthen or shorten the track bar until the measured distance is the same for both sides. Do not exceed 3.25" from the end of the powder coated bar to the end of the threads on the forging See **Figure 12**.



Figure 11. Measuring the Distance from the Tire Face to the Fender.



Figure 12. Max Distance from the End of the Bar to the Bushing Center.

25. Once the rear axle has been centered, tighten the pinch bolt hardware to 90ft-lb.
26. Re-install the factory sway bar end links, refer to **Table 1** for torque values.
27. Re-check bolt torques after the first 100 miles and again after each off-road trip.

Installation is complete

Table 1. Ram HD Bolt Torques

Bolted Joint Location	Wrench Size	Torque
Factory Axle Side Track Bar Bolt	21 mm	130 lb-ft
Factory Frame Side Track Bar Bolt	21 mm	130 lb-ft
M14 and Flagnut	22 mm	130 lb-ft
9/16 Supplied Track Bar Bolt	7/8" / 22 mm	130 lb-ft
Adjuster Pinch Bolt	3/4"	90 lb-ft
Frame Side Sway Bar End Links	18 mm	55 lb-ft