



SYNERGY MFG. 870 INDUSTRIAL WAY, SAN LUIS OBISPO, CA (805) 242-0397

8036 / 8038 – Synergy Jeep JK Rear High Clearance Long Arms

GENERAL NOTES:

- These instructions are also available on our website; www.synergymfg.com. Check the website before you begin for any updated instructions and additional photos for your reference.
- The installation of these control arms are to be used in conjunction with Synergy 8030 JK Rear Long Arm Frame Brackets. See 8030 instructions for Rear Long Arm Frame bracket installation.

PARTS LIST:

- **8036 – Jeep JK Rear High Clearance Long Arm Lower Control Arms**
 - (1) 8036-01-L Jeep JK Rear High Clearance Long Arm Lower Control Arm, Left Side
 - (1) 8036-01-R Jeep JK Rear High Clearance Long Arm Lower Control Arm, Right Side
- **8038 – Jeep JK Rear High Clearance Long Arm Upper Control Arms**
 - (1) 8038-01-L Jeep JK Rear Long Arm Upper Control Arm, Left Side
 - (1) 8038-01-R Jeep JK Rear Long Arm Upper Control Arm, Right Side

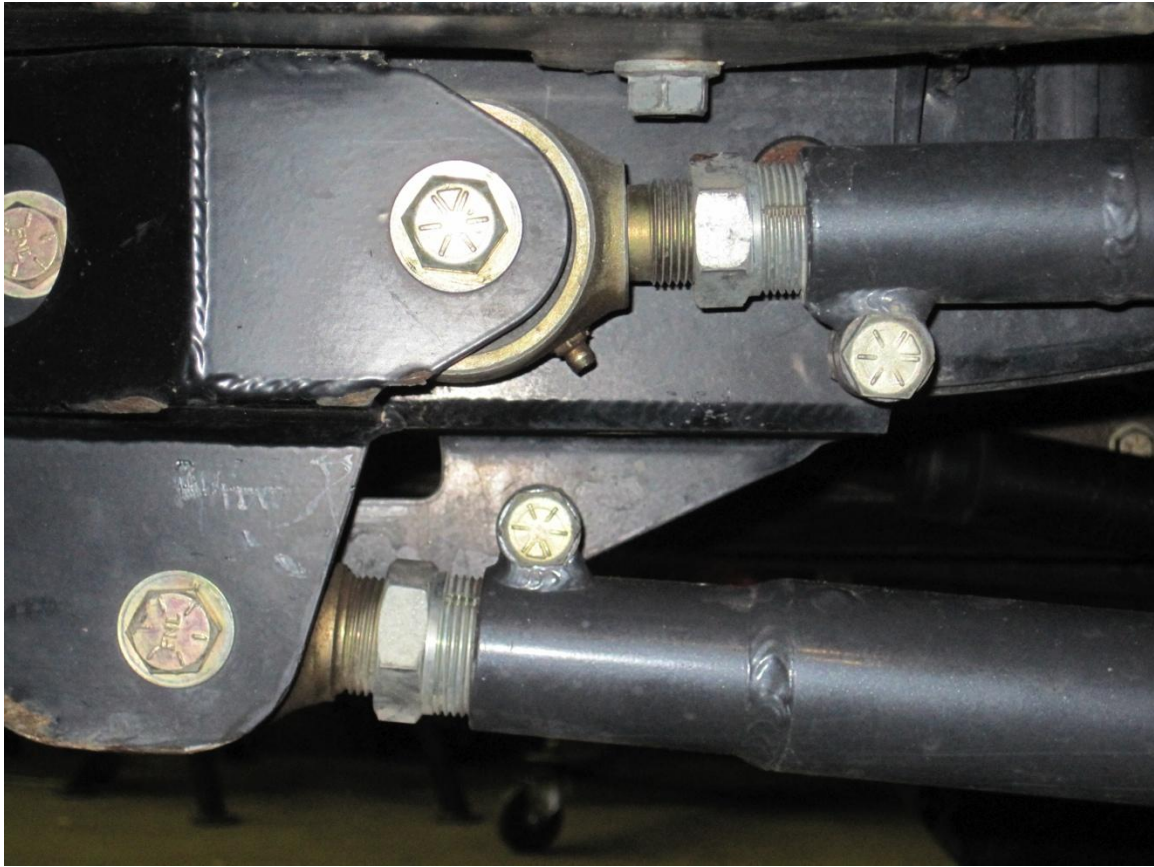
Parts / Tools Needed to complete installation:

- Basic simple hand tools.

INSTALLATION:

INSTALL REAR LOWER CONTROL ARMS

- 1) Pre-preset the length of the lower control arms to 31 5/8". Turn the Johnny joint so that the grease fitting is adjacent to the adjuster pinch bolt.
- 2) Install the new control arms with the bend upward and inward. The bushing goes at the axle end and the Johnny Joint goes at the frame end with the pinch bolt and grease zerk on the top. Reuse the factory mounting bolts. Hand-tighten the control arm bolts, wait until the end of the installation and the jeep is sitting at ride height before you torque these bolts.
- 3) Tighten the factory control arm bolts to 125 ft-lbs. Once final length adjustments are made, be sure the Johnny joints are neutral at ride height and tighten the pinch bolt to 80 ft-lbs. Put a wrench on the adjuster sleeve at this time and try to move the adjuster. Make sure pinch bolt has adequately clamped onto Johnny Joint shank so that the adjuster is not movable. If movable, increase torque on pinch bolt but do not exceed 90 ft-lbs.



INSTALL REAR UPPER CONTROL ARMS

- 4) Preset the length of the upper control arms to 26 3/8". The final length will be determined when the jeep is sitting on the springs and tires to get the pinion at the correct angle.
- 5) Install the new control arms with the bend inward toward the frame. The bend is for tire clearance. The adjustable end goes at the frame end and the fixed end Joint goes at the axle end with the pinch bolt and grease zerk on the bottom. Reuse the factory mounting bolt at the axle end with the new 9/16 bolt at the frame bracket.



- 6) Tighten the factory control arm bolts to 125 ft-lbs. Once final length adjustments are made, be sure the Johnny joints are neutral at ride height and tighten the pinch bolt to 80 ft-lbs. Put a wrench on the adjuster sleeve at this time and try to move the adjuster. Make sure pinch bolt has adequately clamped onto Johnny Joint shank so that the adjuster is not movable. If movable, increase torque on pinch bolt but do not exceed 90 ft-lbs.

Installation is Complete