

THE INFORMATION CONTAINED IN THIS DRAWING IS THE SOLE PROPERTY OF SYNERGY MFG. ANY REPRODUCTION IN PART OR WHOLE WITHOUT THE WRITTEN PERMISSION OF SYNERGY MFG IS PROHIBITED.

Revisions			
Rev.	Description	Date	Approved
A	Initial Release Per ECO 18-046	5/29/18	A.S.



RAM HD Steering Stabilizer Clamp

Installation Instructions

Applications:
 2014+ Ram 2500 4WD
 2013+ Ram 3500 4WD



TITLE:
**RAM HD STEERING STABILIZER CLAMP
 INSTALLATION INSTRUCTIONS**

SIZE	DWG NO:	REV
A	8703-01-INST	A
	SCALE: N/A	PAGE 1 OF 6



RAM HD STEERING STABILIZER CLAMP INSTALLATION INSTRUCTIONS

Thank you for purchasing the best aftermarket products available for your vehicle. We strongly feel that the parts you are about to install should meet or exceed your expectations for performance. Proper assembly is critical to the performance of these components and the vehicle as a whole. Please take the time to carefully read these instructions and familiarize yourself with the installation procedure before working on your vehicle. If you have any questions PLEASE contact Synergy Manufacturing BEFORE beginning installation. Thanks again for supporting Synergy – enjoy the performance benefits of the best aftermarket products available for your vehicle!

Synergy Manufacturing
Phone: (805) 242-0397
Email: support@synergymfg.com

Modifying or otherwise altering vehicle components may cause the vehicle to handle differently than originally designed. It is the driver's responsibility to familiarize themselves with the performance and handling characteristics of the modified vehicle. Vehicles with larger diameter than stock tires must be driven carefully and cannot be expected to perform as stock or meet OEM performance with regard to handling, braking or crash performance. Ensure all replacement components are compatible with vehicle capacities so as not to overload components, especially tires. It is up to the individual to ensure that the vehicle and all components are compatible with the intended vehicle use, including load ratings, road conditions, and driver abilities. Thorough and frequent vehicle inspections are recommended to ensure a safe and reliable state of readiness, especially after off-highway use.



PARTS LIST

8703-01 RAM HD STEERING STABILIZER CLAMP		
QTY	Part Number	Description
1	8703-01	RAM STEERING STABILIZER CLAMP
2	UB-5C-1813-0200	TIE ROD U-BOLTS
4	N/A	5/16-18 NYLOCK NUT
2	N/A	5/16 FLAT WASHER
2	N/A	1/2-20X2.5 HEX HEAD BOLT, GR8
2	N/A	1/2-20 TOP LOCK NUT
2	N/A	1/2 FLAT WASHER

GENERAL NOTES

- These instructions are also available on our website; www.synergymfg.com. Check the website before you begin for any updated instructions and additional photos for your reference.
- This clamp is designed for use with the OEM stabilizer. Other stabilizers may also work, however fitment cannot be guaranteed.
- This clamp is designed to be used in conjunction with the Synergy 8702-01 Tie Rod.

TOOLS REQUIRED

- Basic Hand Tools –18mm, 19mm or 3/4", 1/2" wrenches or sockets
- Painters Tape
- Sharpie or other pen
- Assistant

ESTIMATED INSTALLATION TIME

.5 Hour

INSTALLATION

1. These instructions assume that the vehicle already has a aftermarket 1.75" OD tie rod installed.
2. The steering stabilizer clamp installation may be done with the truck on the ground. Make sure the vehicle is on level ground with the transmission in gear or in park, the parking brake set and the wheels chocked.
3. Fully collapse the stock steering stabilizer. Turn the truck full lock to the driver side and have a assistant hold the wheel at full lock.
4. Place a strip of painters tape on the tie rod. Use a pen to mark the tape at the approximate centerline of the steering stabilizer mounting hole. See **Figure 1**.



Figure 1. Steering Stabilizer Fully Collapsed, Steering Full Lock Driver

5. Turn the truck full lock to the passenger side and fully extend the steering stabilizer. Place a mark on the tape at the approximate centerline of the stabilizer mounting hole. See **Figure 2**.



Figure 2. Steering Stabilizer Fully Extended, Steering Full Lock Passenger

6. Install the steering stabilizer clamp on to the stabilizer. Install the 1/2" bolt with a washer under the head as shown in **Figure 3**. The stabilizer will be offset towards the ground, with the bent side of the bracket pointing upwards.



Figure 3. Correct Orientation of Steering Stabilizer Clamp

7. Place the clamp against the tie rod, in between the tie rod and the axle housing. Loosely install the u-bolts and nuts with washers. Slightly compress the steering stabilizer so that the 1/2" mounting bolt is

centered between the marks on the tape. See **Figure 4**. The u-bolts should approximately line up with the lines on the tape.

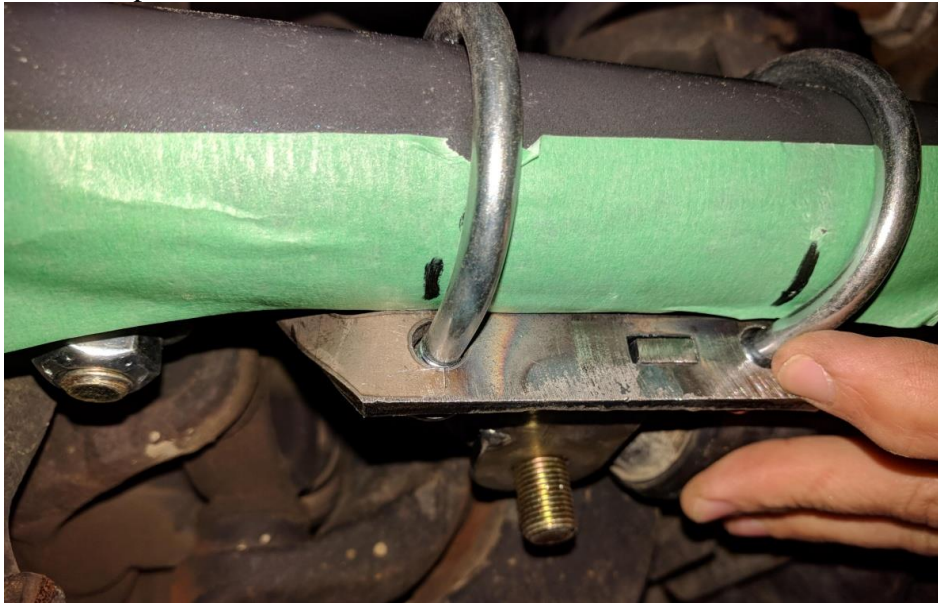


Figure 4. Clamp Centered on Tie Rod

8. Remove the tape without moving the position of the clamp. Make sure the clamp is oriented so that the bolt is perpendicular to the ground. See **Figure 5**. Tighten the u-bolt hardware to 20lb-ft of torque. Tighten the ½” hardware to 80lb-ft.



Figure 5. Clamp Installed with Bolt Perpendicular to Ground

9. Installation is complete. Recheck all hardware after approximately 100 miles, or after each off-road trip.